



NJ PATHWAYS

TO CAREER OPPORTUNITIES

Aligning Education to Build an Innovative Workforce

Welcome.

We ask that you please take this time to mute yourself, thank you.
In the chat, please provide your name, title and organization.



April

Health Services Collaborative Meeting

Theme: Experiential Learning

NJ Pathways to Career Opportunities

New Jersey's Community Colleges and the New Jersey Business and Industry Association have joined together to launch an unprecedented education and training pathways initiative.



AARON FICHTNER

President, New Jersey Council of
County Colleges



MICHELE SIEKERKA, ESQ.

President & CEO, New Jersey Business
and Industry Administration

PARTNERSHIP



NJ PATHWAYS
TO CAREER OPPORTUNITIES
Aligning Education to Build an Innovative Workforce

TODAY'S AGENDA:

- **The Importance of Experiential Learning and Best Practices**
 - Dr. Anthony Blash, associate professor in pharmaceutical, social & administrative sciences (Belmont's College of Pharmacy)
- **Pathways to Career Opportunities**
 - Matthew DiBartolomeo, MA, SHRM-CP Manager, Academic Relations Human Resources (Hackensack Meridian Health)
 - John Torres, student (Middlesex College/Hackensack Meridian Health)
 - Jay Rhee, student (Bergen Community College/ Hackensack Meridian Health)
- **Breakout Sessions Facilitated by the NJ Pathways team**
 - Does your organization have an "experiential learning" best practice?
 - Have there been any roadblocks that you have encountered in implementing experiential learning?
 - Do you have an experiential learning success story (positive outcomes)?

Give Us Your Feedback



FILL OUT THIS QUICK SURVEY
BASED ON YOUR EXPERIENCE
OF THIS MEETING

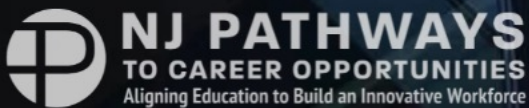


NJ PATHWAYS
TO CAREER OPPORTUNITIES
Aligning Education to Build an Innovative Workforce

Please use the hashtag:

#NJPathways

To share your participation in the
NJ Pathways to Career Opportunities
Industry Collaborative Meetings



NJ PATHWAYS
TO CAREER OPPORTUNITIES
Aligning Education to Build an Innovative Workforce



New Jersey's
Community Colleges





SPEAKER

Dr. Anthony Blash

Belmont's College of Pharmacy



The Importance of
Experiential Learning





HIMSS Certification and Student Outcomes



Anthony Blash Pharm.D., BCompSc, CAHIMS, CPHIMS

Associate Professor

Belmont University College of Pharmacy

2021 WHDC Faculty Grant Recipient

McWhorter Hall, Office #202

My career pathway

- Kean - BS MIS
Prudential - Programmer
- LIU - BS Pharmacy
- Creighton - PharmD
- Healthcare Informatics
Hospitals
Corporate
Academia



Why go from industry to academia?

- Corporate HQ
- Academia

Healthcare Informatics

Experiential Learning - an engaged learning process whereby students “learn by doing” and by reflecting on the experience.

- important to industry
- important to student

How has experiential learning changed in the past 5 years?

- Capstone experiences
 - Wholistic Experientials
 - Embedded within the curriculum
- Day 1*
- Capstone Experientials

Experiential Learning - an engaged learning process whereby students “learn by doing” and by reflecting on the experience.

- important to industry
- important to student

- **EPA**

Know the stuff

Walk the walk

Talk the Talk

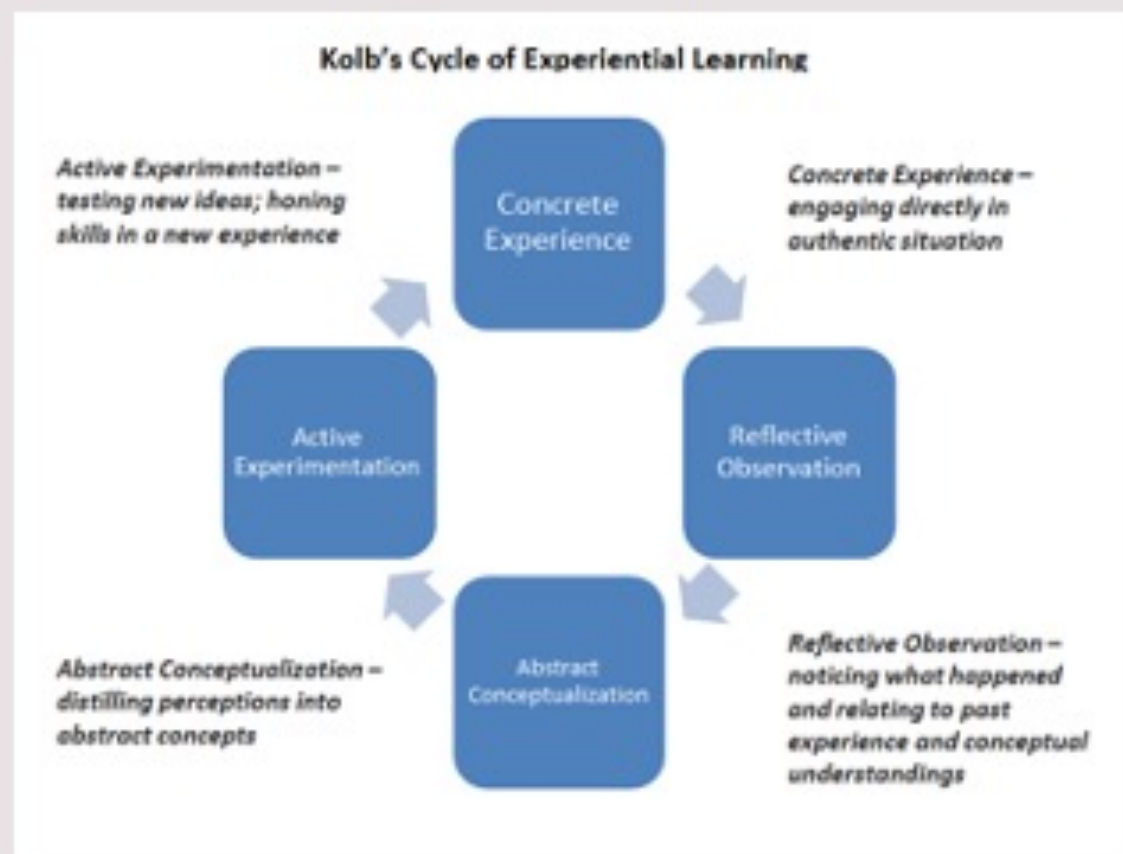
Advice for an organization or educational institution looking to develop or expand an experiential learning opportunity

- Have an evolving understanding of Marketplace need
- Create teams to address that need
- HIMSS23

Best practices in implementing Experiential Learning

Lecture Component

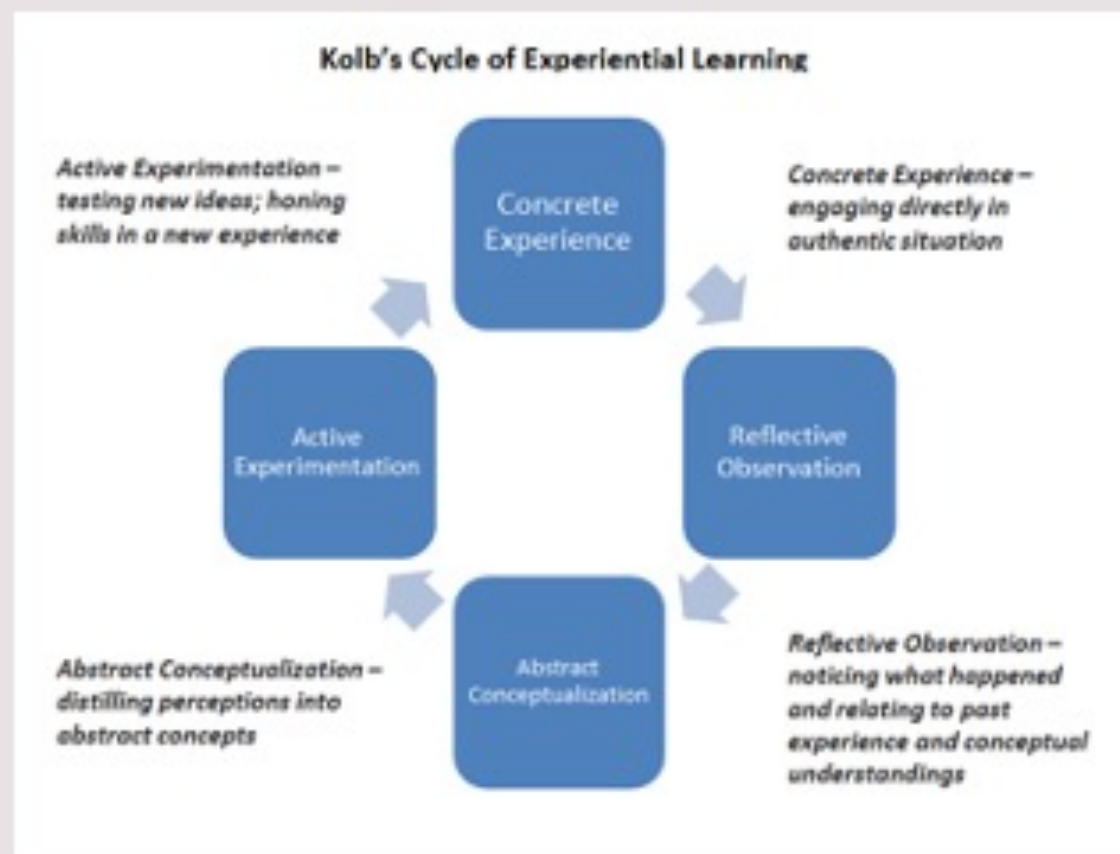
- Distance or In-Person
- Syllabus template
- Specifications Grading
- Traditional Grading
- IRAT / TRAT (Exp)



Best practices in implementing Experiential Learning

Presentation Component

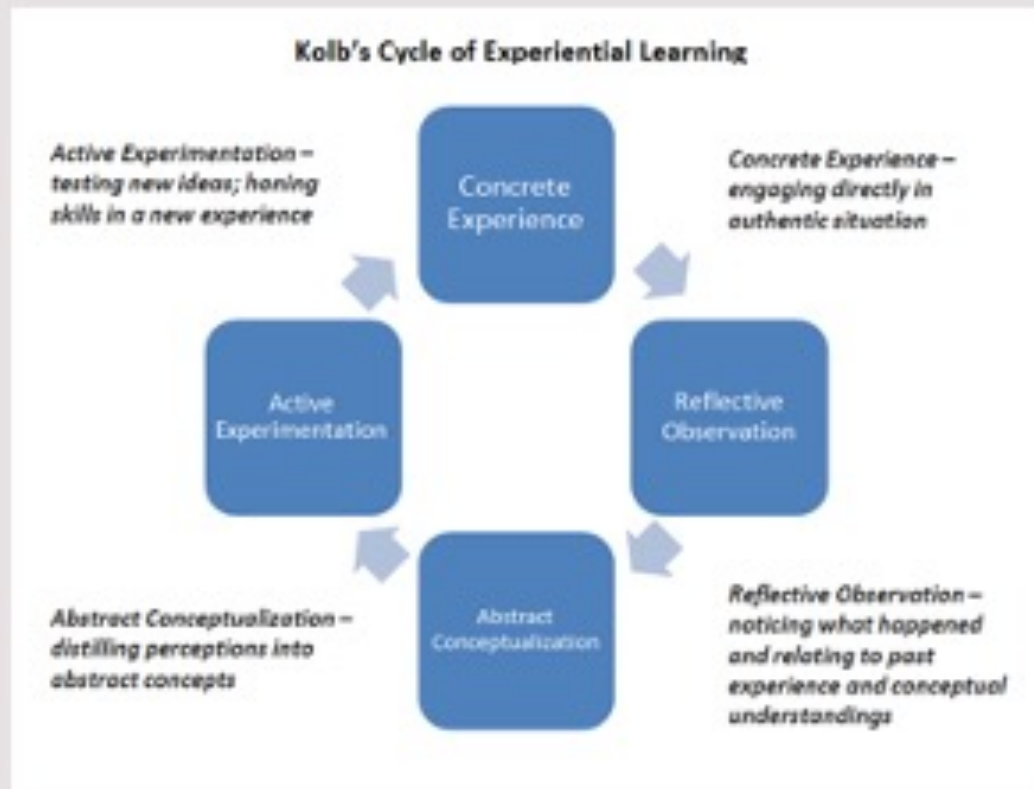
- Teams or Individually
- Curated 5 - 10 year conversations
- Marketplace opportunities
- Marketplace challenges
- Marketplace observations
- Kahoot tournament



Best practices in implementing Experiential Learning

Project Work (Exp)

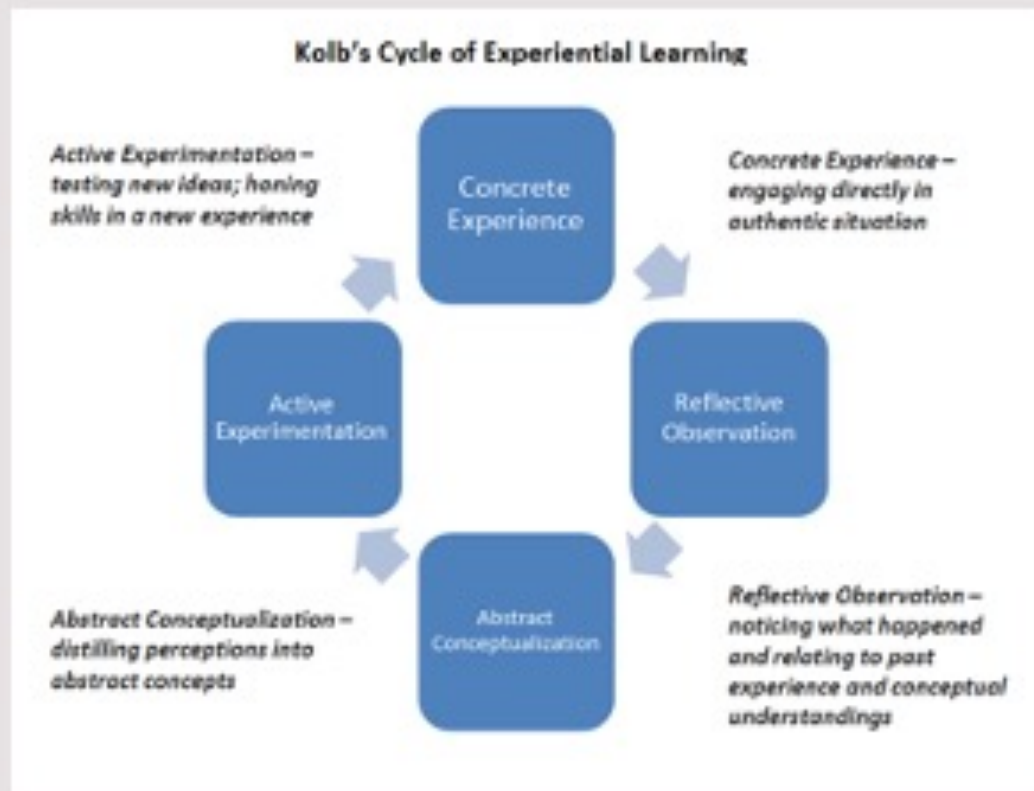
- Low Risk on-Ramp
- Build student confidence, successes
- At the elbow support (initially)
- Reflection
- Engage increasingly complex project work relevant to the Learning Health System



Best practices in implementing Experiential Learning

Project Work (Exp)

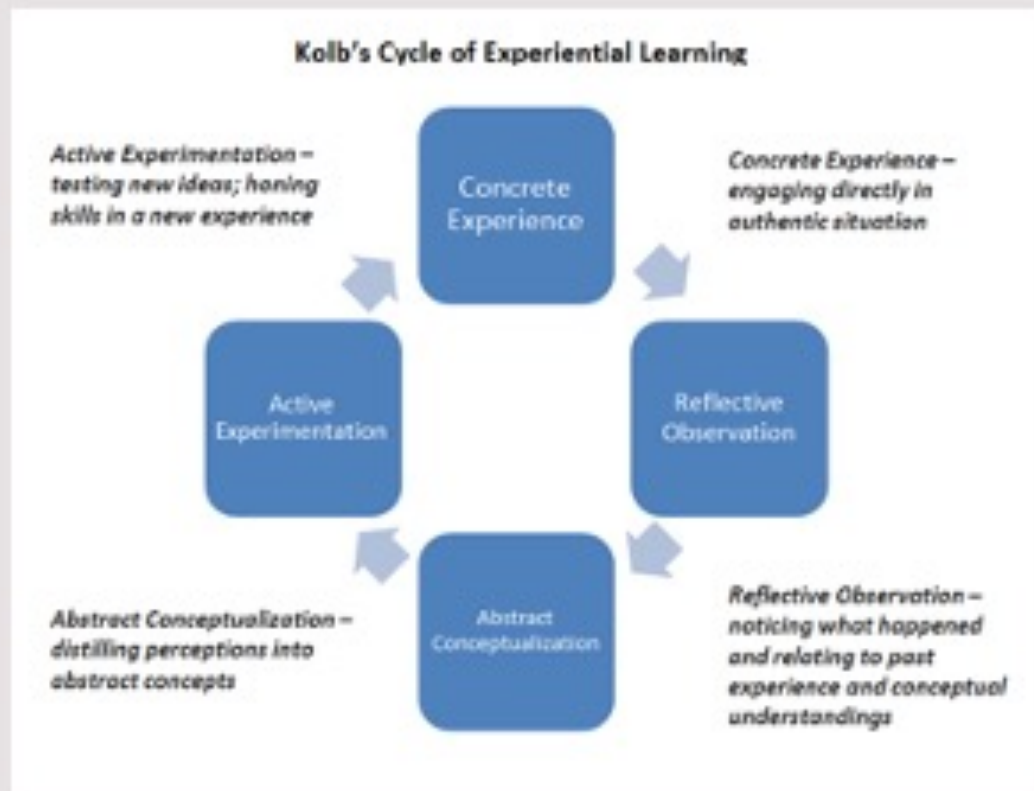
- ARTIFICIAL INTELLIGENCE
- DATA ANALYTICS
- DATA VISUALIZATION
- MACHINE LEARNING
- PREDICTIVE ANALYTICS
- REMOTE DISPENSE CABINET CDS
- EHR CDS
- SMART PUMP CDS
- BCMA CDS



Best practices in implementing Experiential Learning

Live Project Work (Exp)

- Advanced students
- Rotations with marketplace partners
- Faculty Touchstone
- Reflection



Roadblocks/Challenges to implementation of an experiential learning opportunities

- Public Private Partnerships
- Advocacy / Promotion / Marketplace Awareness
- Senior Leadership buy-in / support
- Funding

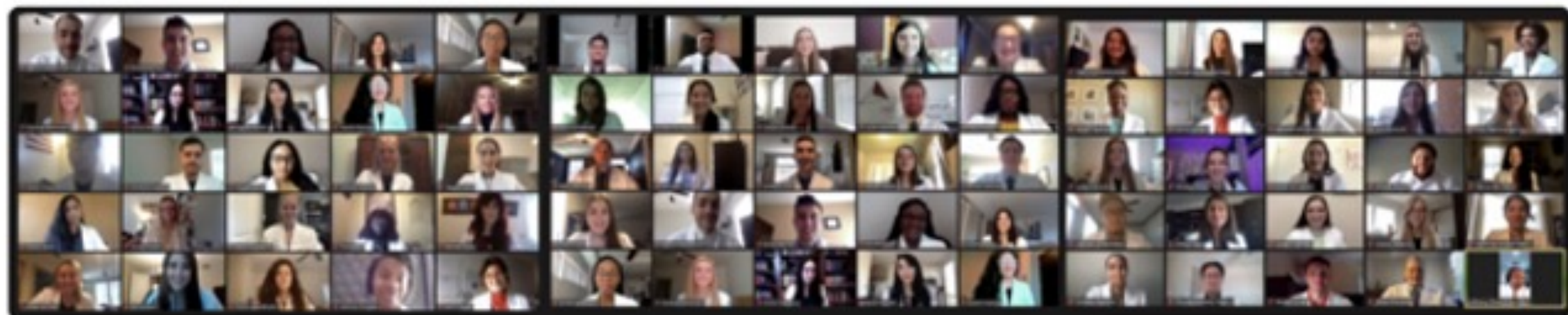
- Common misconceptions people have regarding experiential learning?
- How can we combat these misconceptions and communicate more effectively?

Entire 2020 First Year Cohort at Belmont University's College of Pharmacy Become SQL Data Analysts

Published on September 1, 2021

[Edit article](#)

[View stats](#)



Pathways to Career Opportunities



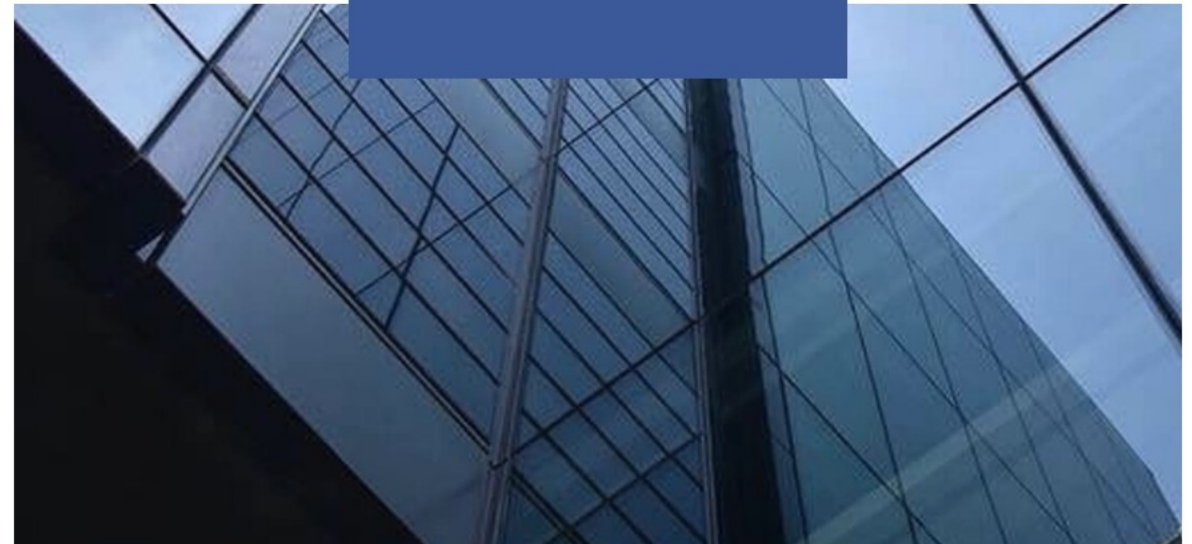
MATT DIBARTOLOMEO

MA, SHRM-CP Manager, Academic Relations
Human Resources (Hackensack Meridian
Health)

Experiential Learning
Opportunities for students at
Hackensack Meridian Health



PRESENTATION



IMPORTANCE OF EXPERIENTIAL LEARNING

Matt DiBartolomeo
Manager, Academic & Community Relations
April 2022



Hackensack
Meridian Health
KEEP GETTING BETTER

HACKENSACK MERIDIAN *HEALTH* OVERVIEW



17

Hospitals



500+

Patient Care
Locations



36,000

Team Members



7,000

Physicians

3

Academic
Medical Centers



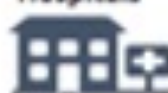
2

Children's
Hospitals



9

Community
Hospitals



Hackensack
Meridian *Health*
KEEP GETTING BETTER

EXPERIENTIAL LEARNING

- 'Learning by doing'
- Types
 - Clinical rotations
 - Radiology, Respiratory, Pharmacy Tech
 - Non-clinical internships
 - Marketing, IT, Finance
 - Nursing
 - Externships
 - 'Earn While You Learn' program (PCT & Patient Observer)
 - Apprenticeships
 - PCT, Pharmacy Tech & Central Sterile
 - Structured Learning Experience
 - Emerging trends
 - One-day job shadowing ('Intern for a Day')



BENEFITS/ADVANTAGES

- Students
 - Minimizes workplace uncertainty for candidates
 - More confident & job-ready candidates
 - Different environments
 - Provides realistic job expectations
 - Network with leadership
- Employers
 - Long-term interview
 - Creates brand affinity
 - Savings on costs & resources



Hackensack
Meridian Health
KEEP GETTING BETTER

BEST PRACTICES

- Mimic application, interview, hiring process
- Department-specific orientation
- “See the forest for the trees”
- Assessment & evaluations (midpoint & post-experience)



Hackensack
Meridian Health
KEEP GETTING BETTER



Please Join a Breakout Room

PLEASE FOLLOW THESE INSTRUCTIONS:

1. Once opened, you will be automatically assigned to a Breakout Room.
2. Click Breakout Rooms in your meeting controls.
3. When prompted, click "Join Meeting."
4. Once you're in the Breakout Room, please put your name and title in the chat.
5. Please raise your hand to respond to the questions that are being presented.