

**DATA  
SCIENCE**

# **TECHNOLOGY & INNOVATION COLLABORATIVE**



**NJ PATHWAYS**  
**TO CAREER OPPORTUNITIES**  
Aligning Education to Build an Innovative Workforce

# ***WELCOME***



**Dr. Anthony J.  
Iacono**

President (County  
College of Morris)



**NJ PATHWAYS**  
TO CAREER OPPORTUNITIES  
Aligning Education to Build an Innovative Workforce

# ***OPENING REMARKS***



**Dr. Aaron Fichtner**

President  
(NJCCC)



**Kyle Sullender**

Director of  
Economic Policy  
Research (NJBIA)



***HOSTED BY***



**Veda Shamsid-Deen, Esq.**

Director, Technology and  
Innovation Sectors Strategy and  
Workforce Partnerships  
(NJCCC)



**NJ PATHWAYS**  
TO CAREER OPPORTUNITIES  
Aligning Education to Build an Innovative Workforce



# AGENDA

- Data Science Pathway at County College of Morris
- Data Science Pathway at Camden County College
- NJBDA & NJ Pathways
- Pathways for the Center of Workforce Innovation for Data Science
- Industry Panel Discussion



**NJ PATHWAYS**  
TO CAREER OPPORTUNITIES  
Aligning Education to Build an Innovative Workforce

# ***DATA SCIENCE PATHWAY***

County College of Morris



**Kelly Fitzpatrick**

Mathematics Professor



# County College of Morris

## Data Science Pathway

NJCCC Center of Workforce Innovation

November 16<sup>th</sup> 2022



Kelly Fitzpatrick  
kfitzpatrick@ccm.edu







## CCM Highlights

**WORKFORCE** Development  
Created two certificates for  
working professionals:  
Data Visualization and  
Data Analytics



These **INITIATIVES** are  
supported by an  
NSF Grant #2000887

**16** Credit Data  
Analytics Certificate

Students **LEARN** R,  
Python, SQL and Tableau

ASA Datafest **WINNERS**



**CCM** is the Administrative  
Community College Partner  
of the Center

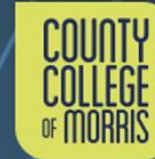
The certificate in Data Analytics will prepare individuals to apply data science techniques to:

- generate insights from data
- identify and predict trends utilizing multiple variables
- work with real world datasets to answer and solve societal problems
- explore ethical issues related to data privacy, security and integrity





# **BUILDING A** **DATA SCIENCE PATHWAY** **OPPORTUNITIES FOR STUDENTS**



Fall 2021 - Fall 2022

**Enrollment in  
Introduction to  
Data Science Course**

**55**

**Enrollment in  
Data Analytics  
Certificate**

**20**

**Student  
Internships**

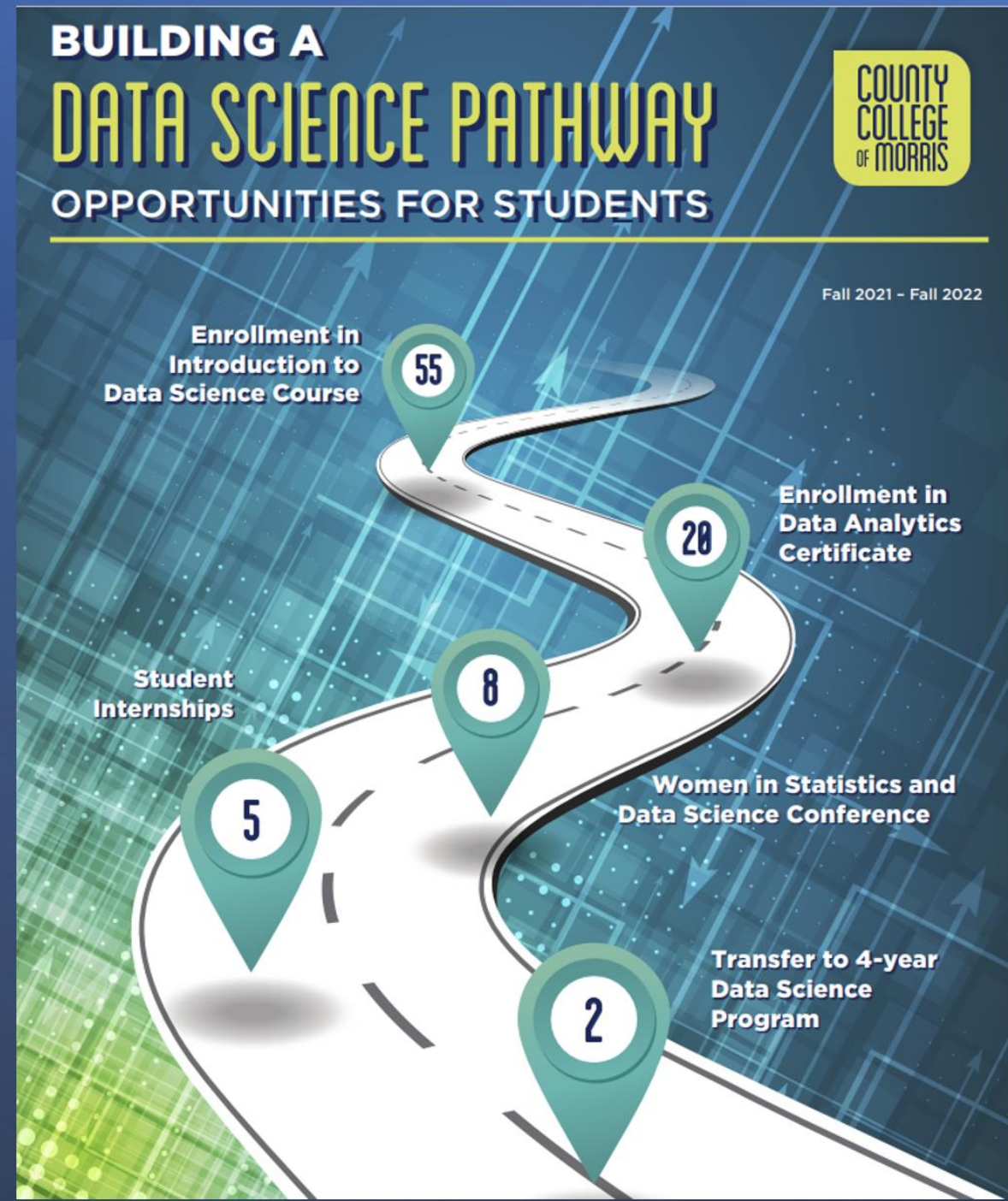
**8**

**Women in Statistics and  
Data Science Conference**

**5**

**Transfer to 4-year  
Data Science  
Program**

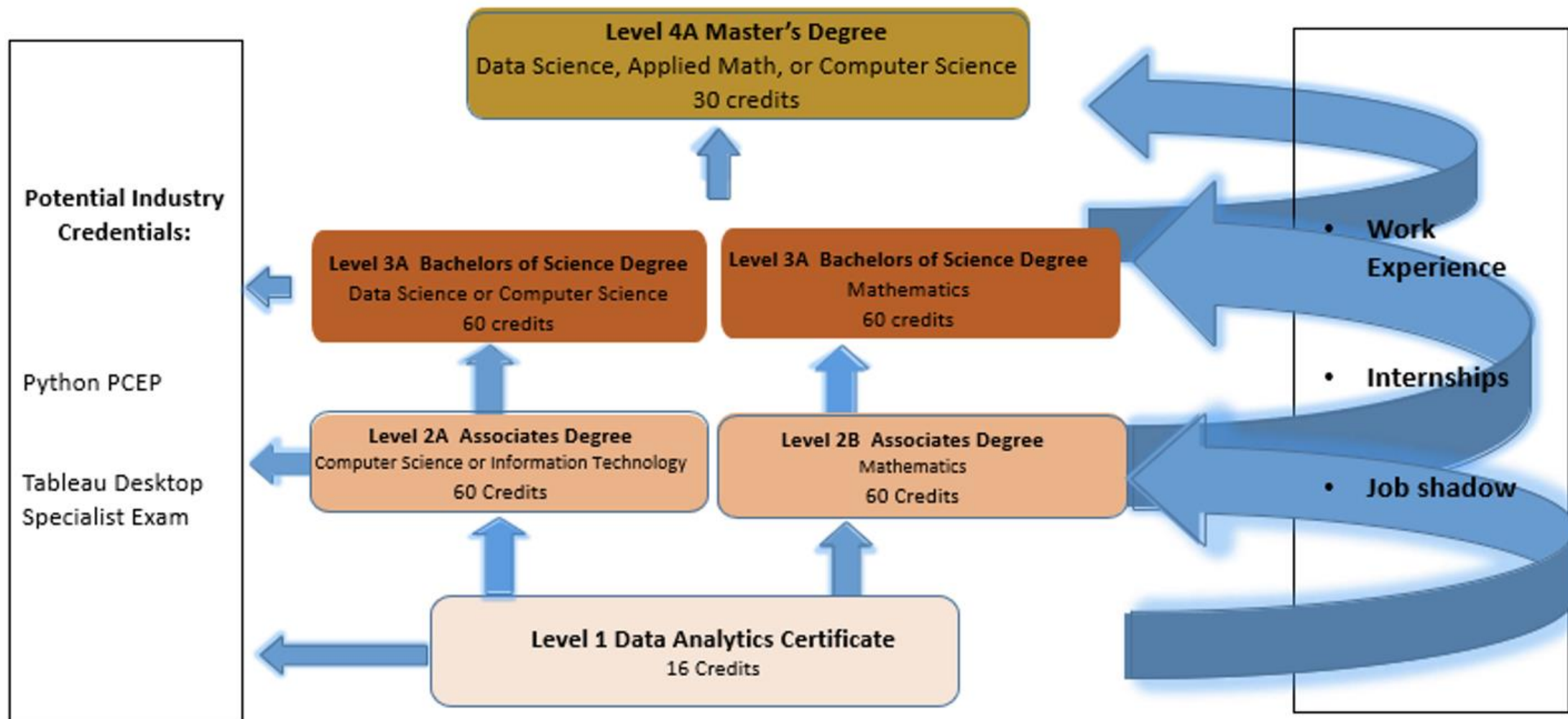
**2**





# NJ Stackable Credentials Model for Data Science (Data Practitioner, EDC) 2+2+1

Reference: <http://oceansofdata.org/our-work/big-data-stackable-credentials-report>



## ADVISORY BOARD



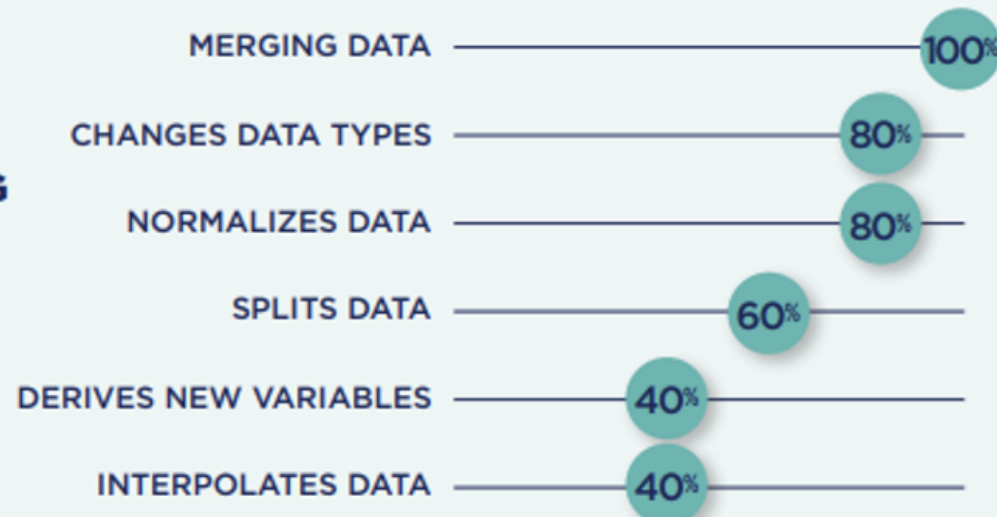
Intel is the newest member to join our board.

### Resource for Advisory Board Meetings:

Malyn-Smith, J., & Ippolito, J. (2018). Tools for building a big data career pathway (NSF-ATE DUE 1501927). Oceans of Data Institute, Education Development Center. Retrieved from <http://oceansofdata.org/our-work/tools-building-big-data-career-path>

The advisory board met in the Spring 2021 semester. The discussion focused on the top six skills students' need to learn relating to transforming the data.

### TOP 6 SKILLS FOR TRANSFORMING DATA



Atlantic  
Health System



Wider Circle®



The  
Data School

# Data Analysis is for EVERYONE

## Bringing everybody to the table



### DIVERSITY

- Increase underrepresented populations by using:**
- real world examples
  - collaboration
  - group projects



### EQUITY

- Meet students at their academic level
- Using OER /Free resources

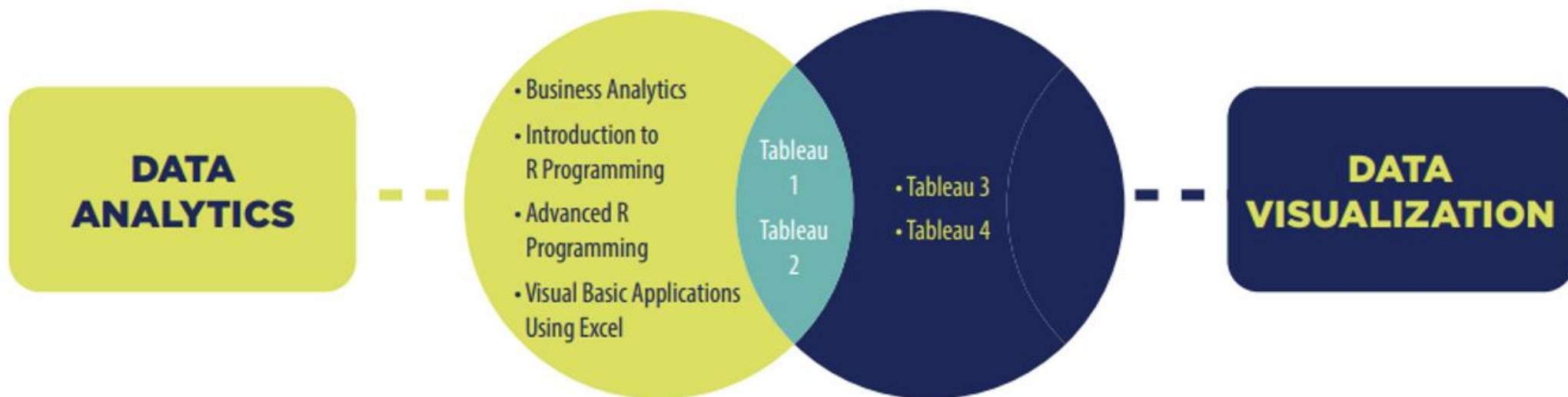


### INCLUSION

- Low barriers to entry
- Low math prerequisites
- Using Point and Click software
- Computational Thinking



# DIFFERENTIATE YOURSELF & GET RECOGNIZED

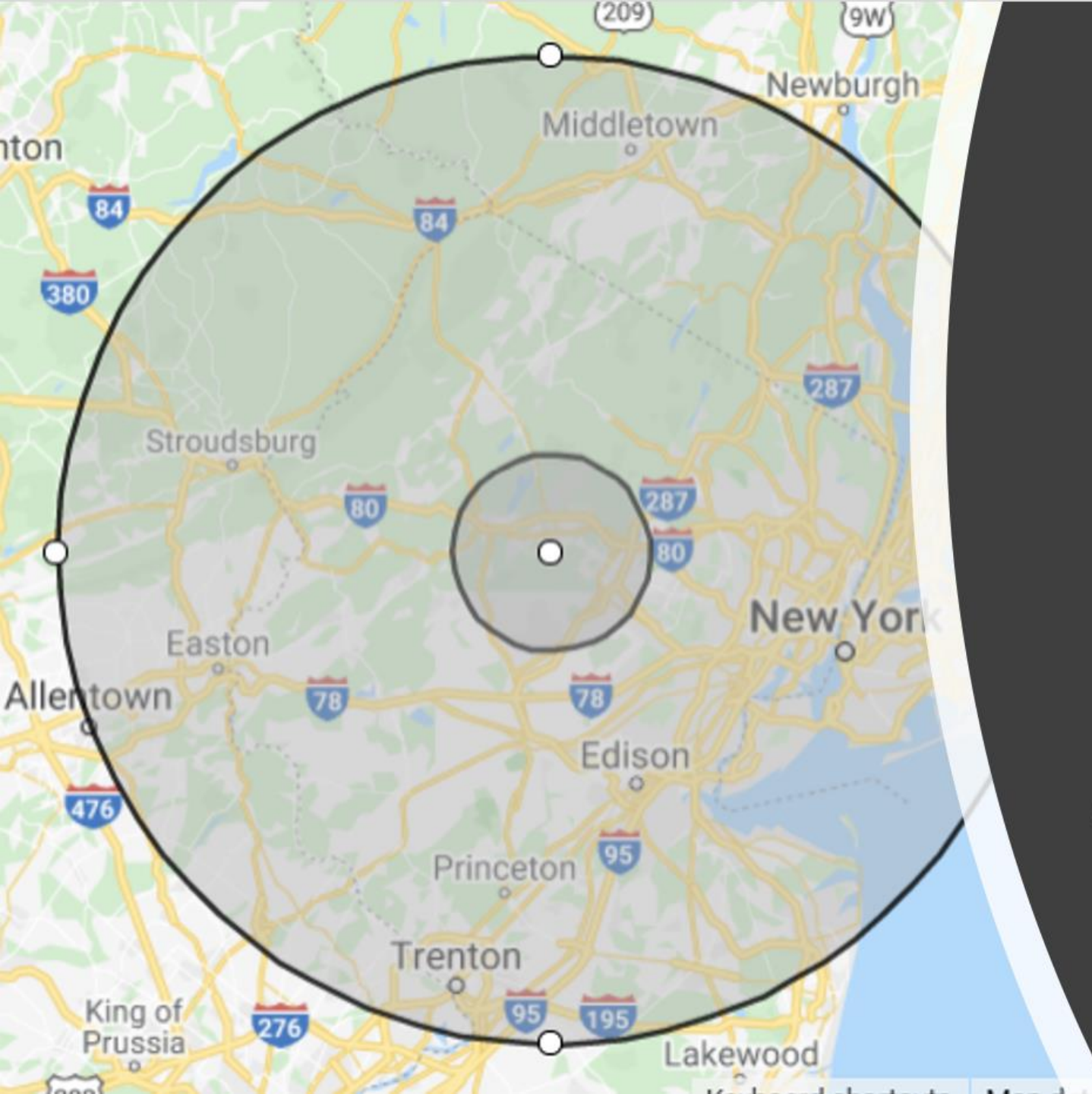


Take all 6 courses  
to receive a  
Data Analytics Certificate

Take all 4 courses to receive a  
Data Visualization Certificate  
and prepare yourself for the  
Tableau Specialist Desktop Exam



CENTER FOR  
**WORKFORCE  
DEVELOPMENT**



## Indeed search for jobs requiring Tableau skills

- A 25-mile radius of the college, returns **421** postings
- A 50-mile radius of the college, returns **4,172** postings
- A 100- mile radius of the college, the same search returns **5,397**



Data Science Pathways by [Kelly Fitzpatrick](#)



- Choose a Pathway
- ☒ (All)
  - ☒ Internships
  - ☒ Jobs
  - ☒ Transfer

Data Science Pathways

The County College of Morris has created several different pathways for our students. Hover over an icon to select your **future**: internships, jobs and transfer opportunities. Click an icon, and it will bring you to the webpage to learn more about this opportunity. If you have questions please contact Professor Fitzpatrick at [kfitzpatrick@ccm.edu](mailto:kfitzpatrick@ccm.edu).

BASF      Booz Allen (Remote)      Deloitte      Honeywell      National Security Agency (NSA)      Ramapo      San Jose State (Remote)      The Data School      White House





Thank you for spending  
the day at CCM.



# ***ALUMNI SPEAKER***



**Thomas Ortega**

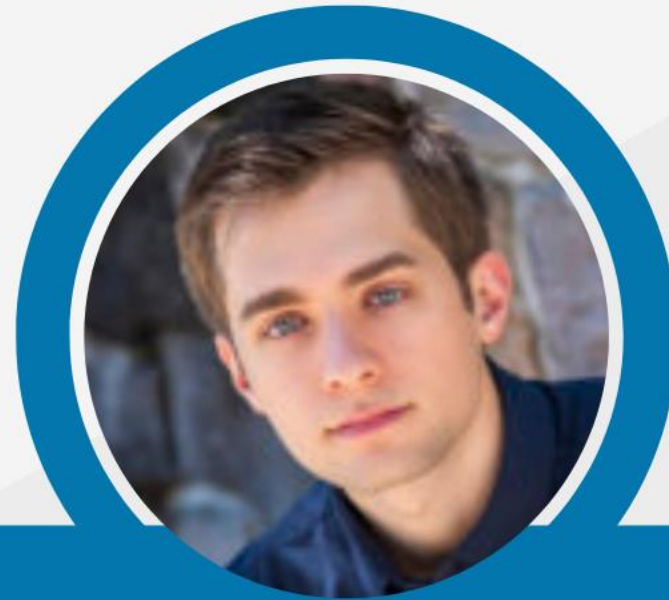
Co-Op, UPS TEC Analytics  
Team (UPS)

County College of Morris Alumni



**NJ PATHWAYS**  
TO CAREER OPPORTUNITIES  
Aligning Education to Build an Innovative Workforce

# ***ALUMNI SPEAKER***



**Joseph Gatto**

PhD Student, Machine Learning  
(Dartmouth)

County College of Morris Alumni



**NJ PATHWAYS**  
TO CAREER OPPORTUNITIES  
Aligning Education to Build an Innovative Workforce





# ***DATA SCIENCE PATHWAY***

## **Camden County College**

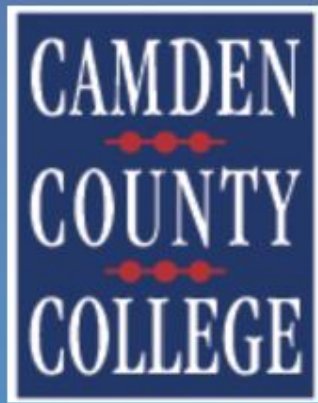


**Anita Wright**

Asst. Professor of Computer  
Science







# Camden County College

## Data Science (DSC.AAS)



# Program Overview

- The [Data Science AAS degree](#) timeline
  - Received state approval 10/2020
  - Pilot classes were offered in 2021
  - CCC joined the NJ Pathways to Career Opportunities Center of Workforce Innovation for Data Science in 2022
  - Fall 2022 we have 5 matriculating majors with several other students sampling the gateway Ethics course
- The program prepares students for [careers in Data Science or Data Analytics](#)
- The AAS degree choice provided the opportunity to incorporate lab-based data science courses that focus on the practice of data science activities

# Program Outcomes

- Exhibit **professionalism** and adopt ethical decision-making principles for the analysis, management and presentation of data with an understanding of one's responsibilities within a professional setting.
- Develop solid **analytical reasoning, critical thinking and technical skills** in order to extract, wrangle, analyze and present data for multiple disciplines to broad audiences that follow professional standards to enhance understanding and decision-making.
- Demonstrate the ability to **work independently and as a member of a team** with modern technology tools to accomplish data life cycle project goals and meet deadlines.
- **Communicate technical knowledge** effectively for a broad range of persons that include customers, managers, and peers.

# Progression of Course Work

## Year 1

### **First Semester**

Ethical Use of Data

Intro and Overview of the Data Lifecycle, Data  
Formats, and Tools

Statistical Methods and Research Techniques

Mathematics Foundation

Written Communication

### **Second Semester**

Data Preparation and Munging

Python Programming

Hypothesis Testing and Forecasting

Mathematics Foundation

Written Communication





# Progression of Course Work

## Year 2



### **Third Semester**

Data Analysis

Data Science Applications Programming (Python)

Mathematical Modeling

Macro Economics (Social Science)

Humanities Elective

### **Fourth Semester**

Data Visualization and Presentation

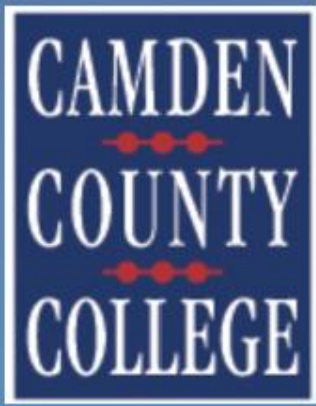
R Statistical and Machine Learning

Probabilistic Modeling

Capstone Seminar

# Current NJ Pathways Initiatives

- Certificate Program
- Advisory Board
- Professional development
- PLA/Industry Certifications
- Dual Credit
- Student Transfer Options



**Thank you!**





# ***NJBDA & NJ PATHWAYS***

## **New Jersey Big Data Alliance**



**George Avirappattu, Ph.D.**

Associate Professor of Mathematics  
(Kean University)



# NJBDA and NJ Pathways

Dr. George Avirappattu  
VP for Education and Training, NJBDA

Associate Professor of Mathematics, Kean University  
gavirapp@kean.edu



## New Jersey Big Data Alliance

The New Jersey Big Data Alliance ([NJBDA](#)) is a consortium of 18 New Jersey colleges and universities, along with industry and government partners, with the goal to leverage New Jersey's academic expertise in Big Data analytics, cybersecurity, artificial intelligence, and advanced computing technologies to **promote data-driven economic development across the state.**

In 2014, the state enacted P.L. 2014, c.33 (N.J.S.A. 53:17C-3.4) that designated the NJBDA as New Jersey's "**Advanced Cyberinfrastructure Consortium**" along with a starter mission.

Currently, the NJBDA is an **all-volunteer organization** that focuses our efforts primarily on research, networking and workforce development activities. Accomplishments include:

- ✓ Secured a US Economic Development Authority grant - ***"Building the Capacity of New Jersey Businesses and Workers to Adjust to and Successfully Compete in the Digital Age"*** to provide education and training for students and businesses to spur the adoption of data analytics to grow the state's data driven economy.
- ✓ Wrote report for the Governor's Task Force on the Future of Work: ***"New Jersey Big Data Workforce Roadmap: An Examination of the Challenges and Opportunities for New Jersey's Workforce to Successfully Compete in the Data-Driven Economy"***.
- ✓ Hosting an ***Annual "Big Data" Symposium*** every year since 2013. This event includes a student job fair, world-renowned keynote speakers, academic panels and industry workshops.
- ✓ Organized a ***Big Data Career Workforce Forum***, with New Jersey employers discussing hiring needs for advanced computing positions, resources to fill the talent pipeline, and connecting students to employers.






## New Jersey Big Data Alliance

### Future Projects

The NJBDA recently received state line-item funding to hire an executive director, who will be based at NJIT. With this staff support the NJBDA plan to expand into some additional areas. Potential projects include:

- Partner with the **NJ Pathways** initiative to improve connections for students and faculty in Data Science across all the 2 year and 4-year higher education institutions in New Jersey.
  - Expand **industry partnerships and memberships of companies** to enable access to NJBDA expertise and opportunities for economic growth.
  - **Provide an assessment the State's cyberinfrastructure** and the expertise necessary to operate it.
  - **Identify strategies** to catalyze advanced cyberinfrastructure to drive economic development.
  - Develop **"Big Data" curriculum materials** which can be offered at New Jersey colleges, universities, community colleges and even high school and middle schools as part of STEM educational initiatives.
  - Become a **one-stop shop for the state's research and development community** to engage our leading-edge academic community in big data research and project support.
- 
- A decorative graphic at the bottom of the slide featuring abstract, flowing lines in shades of green and blue, suggesting a digital or data-driven theme.

## NJBDA Members & Partners – 18 University Members and growing

The proud member institutions of the New Jersey Big Data Alliance are...



The proud corporate members of the New Jersey Big Data Alliance are...



The proud partners of the New Jersey Big Data Alliance are...



## **Potential Avenues for NJBDA Engagement**

- Organize a seminar(s) for all member institutions for NJ PATHWAYS
  - Introduce the NJ Pathways
  - Explore articulation agreements
- Arrange NJBDA visit to Pathways Centers
- Offer workshops for County College/High School faculty
- Help develop data science curriculum



## **Potential Avenues for NJBDA Engagement – continued...**

- Identify industry valued courses and programs across colleges
- Help create industry valued courses aligned with credentials
- Help attract industry partners with data science needs
- Help develop experiential learning and internship opportunities
- Get on new NJBDA director's agenda

## **NJBDA Executive Committee**

- **President** - Matt Hale, Seton Hall
- **Secretary** - Chanelle Lester, TCNJ
- **Treasurer** - Candace Fleming, Montclair
- **VP Academic Membership** – Adam Scarzafava, EDGE
- **VP Affiliate Membership** – Rashmi Jain, Montclair
- **VP Education and Training** – George Avirappattu, Kean
- **VP Entrepreneurship** – Dave Belanger, Stevens
- **VP Research Collaboration** – Forough Ghahramani, EDGE
- **VP Advanced Technology** – Demetrios Roubos, Stockton
- **VP Government Relations** – Peggy Brennan-Tonetta, Rutgers
- **VP Marketing and Outreach** – Wright Seneres, Princeton

## Q&A





# ***CENTER OF WORKFORCE INNOVATION FOR*** Data Science



**Veda Shamsid-Deen, Esq.**

Director, Director for Technology &  
Innovation Sectors Strategy and Workforce  
Partnerships (NJCCC)



**NJ PATHWAYS**  
TO CAREER OPPORTUNITIES  
Aligning Education to Build an Innovative Workforce



# ***PATHWAYS:***

## **Data Science**



**NJ PATHWAYS**  
TO CAREER OPPORTUNITIES  
Aligning Education to Build an Innovative Workforce



# ***PATHWAY:***

## **Data Science**

### **Connection to High School (Dual Enrollment)**

Develop two Data Science programs  
for all High Schools.



**NJ PATHWAYS**  
**TO CAREER OPPORTUNITIES**  
Aligning Education to Build an Innovative Workforce





# ***PATHWAY:*** **Data Science**

## **Prior Learning Assessment (Credit)**

Evaluate non credit credentials (Python entry level and Python Programming courses) to embed in Data Science AS or AAS at Camden County College, Middlesex College, County College of Morris, and Brookdale Community College (under development).

# ***PATHWAY:***

## **Data Science**

### **Connection to 4-Year University**

Create model 2+2 articulation agreement with Ramapo University.



**NJ PATHWAYS**  
TO CAREER OPPORTUNITIES  
Aligning Education to Build an Innovative Workforce







# ***PATHWAY:***

## **Data Science**

### **Experiential Learning**

Develop experiential learning program to be embedded into Data Science AS or AAS at Camden County College, Middlesex College, County College of Morris, and Brookdale Community College (under development).



# ***PATHWAY:***

## **Data Science**

### **Adult Learners (Non Credit)**

Develop non credit workforce program embedding industry credentials (Python Programming, R, and Tableau).



**NJ PATHWAYS**  
TO CAREER OPPORTUNITIES  
Aligning Education to Build an Innovative Workforce





# ***PATHWAY:*** **Data Science**

## **Professional Development**

Create train-the-trainer resources, share it widely with other education institutions statewide, and deliver professional development on the Data Science Pathway.



**NJ PATHWAYS**  
**TO CAREER OPPORTUNITIES**  
Aligning Education to Build an Innovative Workforce





# ***GIVE US YOUR FEEDBACK***



**NJ PATHWAYS**  
TO CAREER OPPORTUNITIES  
Aligning Education to Build an Innovative Workforce





# ***DATA SCIENCE*** Industry Panel



**Aaron Price**

President & CEO  
(TechUnited)



**Margo Connors**

Senior Program  
Manager (Microsoft)



**Gary Mann**

CEO  
(Jasfel Analytics)

---

# THANK YOU

---

**#NJPATHWAYS**



@NJCommColleges



@NJ Community Colleges



@NJCommColleges



@NJCommColleges



@NJCommColleges

*NJPathways.org*



**NJ PATHWAYS**  
TO CAREER OPPORTUNITIES  
Aligning Education to Build an Innovative Workforce