

THE PULSE OF AI CONFIDENCE

TWO-YEAR COMMUNITY COLLEGE

COUNTY COLLEGE
OF MORRIS
TWO-YEAR. BIG FUTURES.



LEARN
GROW
BELONG

CURIOUS. CAPABLE. CONFIDENT.
TOGETHER, WE BUILD WHAT'S NEXT.

Kelly Fitzpatrick
AVP Institutional Effectiveness

AI misconduct cases are climbing at UF – and so are the stakes for students

UF promotes responsible AI use as students accused of misuse criticize long process



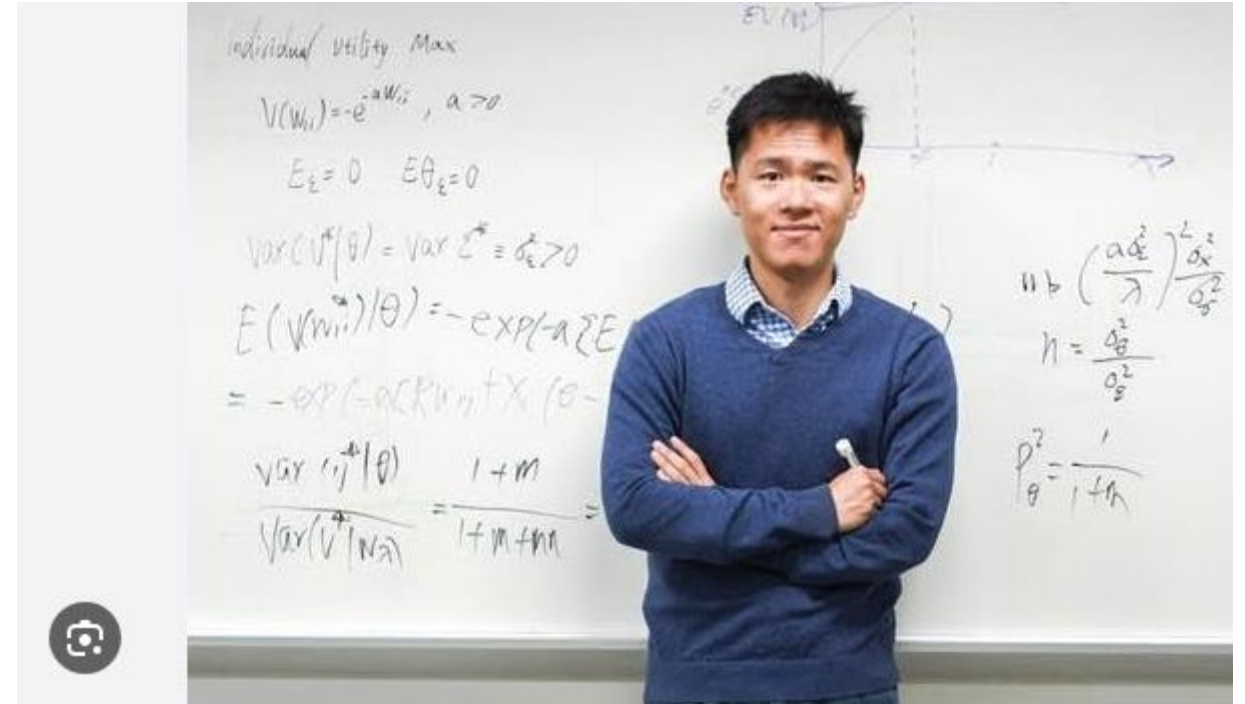
By **Swasthi Maharaj**

April 13, 2026 | 9:00am EDT

In Banning AI, Is Berkeley Law Shortchanging Its Students – and Endangering their Future Clients?



By **Bob Ambrogi** on May 27, 2026



A death penalty': Ph.D. student says U of M expelled him over unfair AI allegation | MPR News November 2024

AI SURVEY FALL 2025

AT COUNTY COLLEGE OF MORRIS



~400

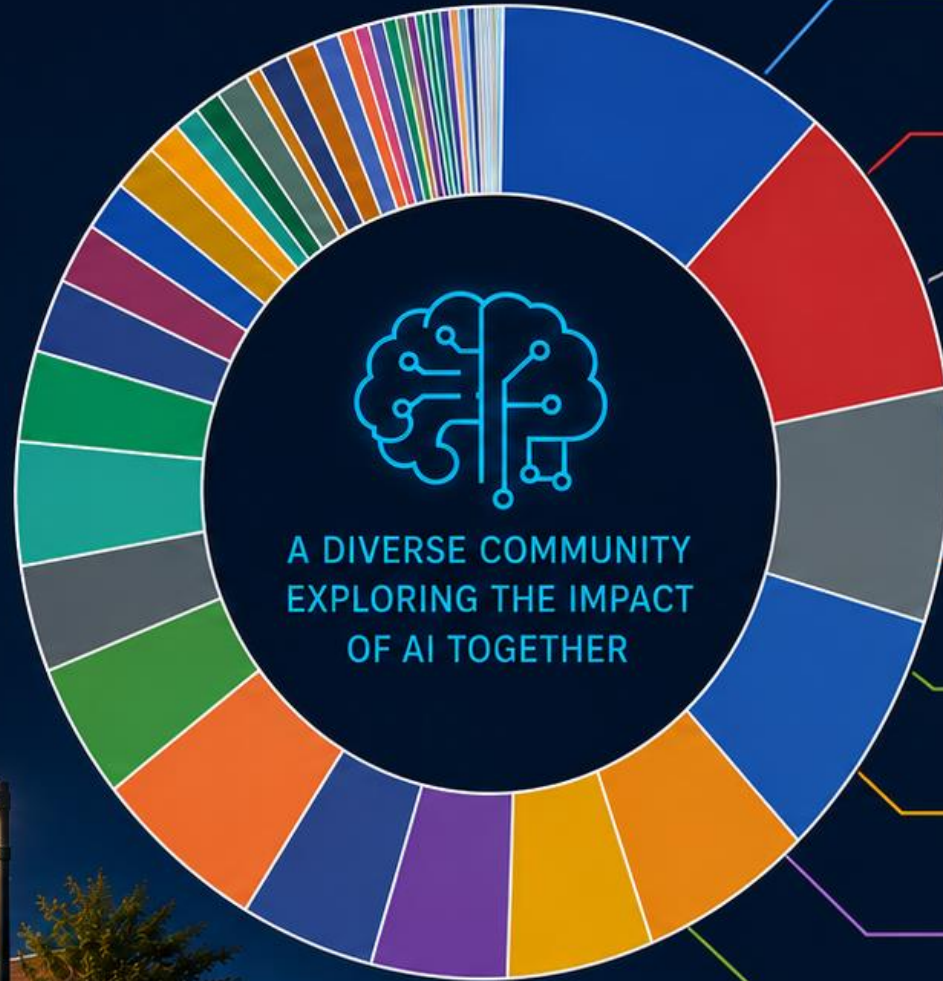
STUDENTS RESPONDED




REPRESENTING A DIVERSE
RANGE OF MAJORS AND
PROGRAMS



YOUR INSIGHTS HELP
SHAPE HOW WE **LEARN**,
TEARN, **TEACH**, AND
INNOVATE TOGETHER.



 Business Administration (P2110)


 Criminal Justice (P2950)

 Nursing (P3800)


 Liberal Arts & Sciences:
Humanities/Social Sciences (P1130)

 Radiography (P3840)

 Computer Science (P2500)

 Engineering Science (P2180)

 None of the Above

 Mechanical Engineering
Technology (P3700)

 Other Majors
(Each < 3%)

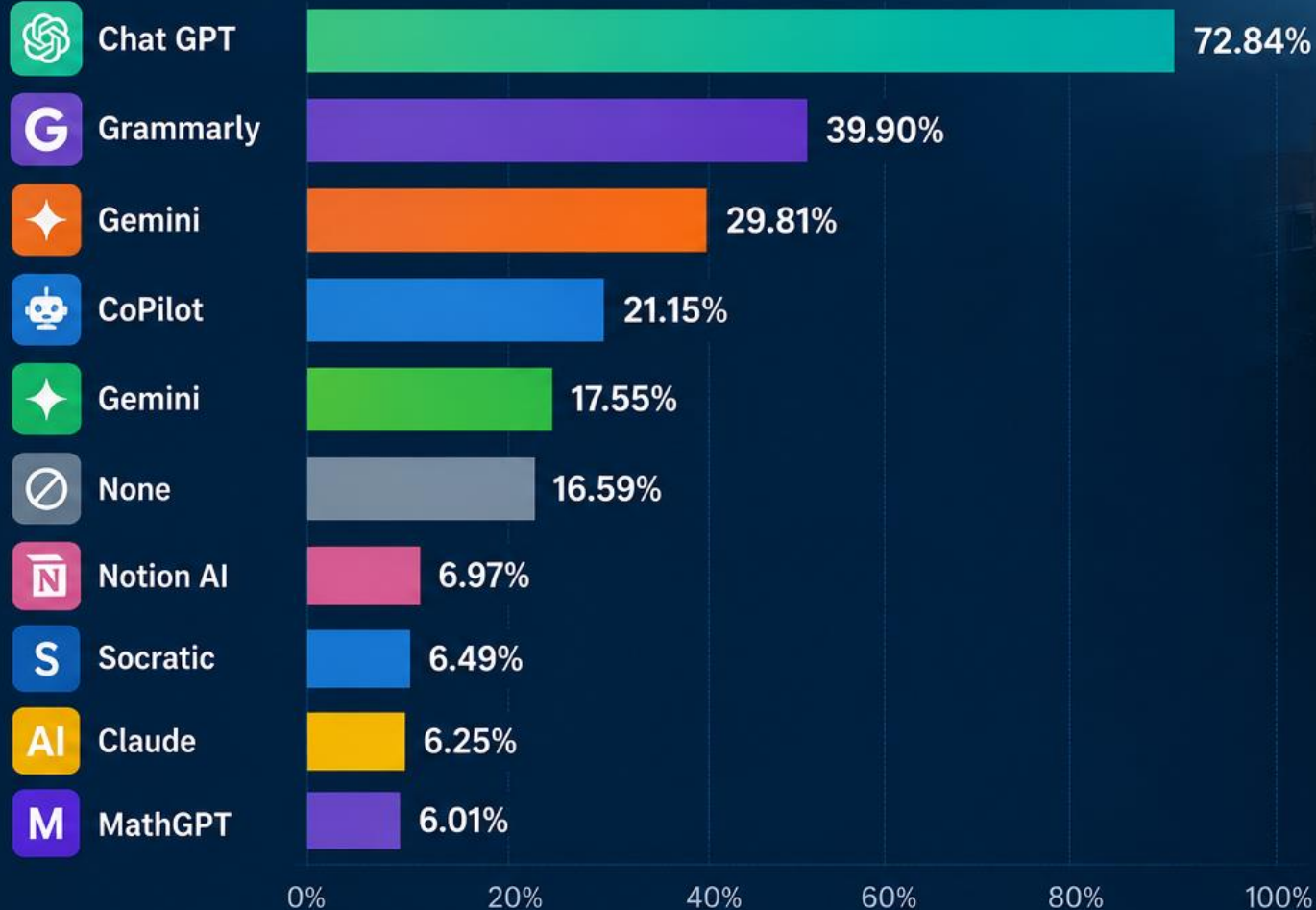


AI TOOLS OUR STUDENTS KNOW

AT A TWO-YEAR COMMUNITY COLLEGE



What artificial intelligence (AI) tools are you familiar with?
Check all that apply.



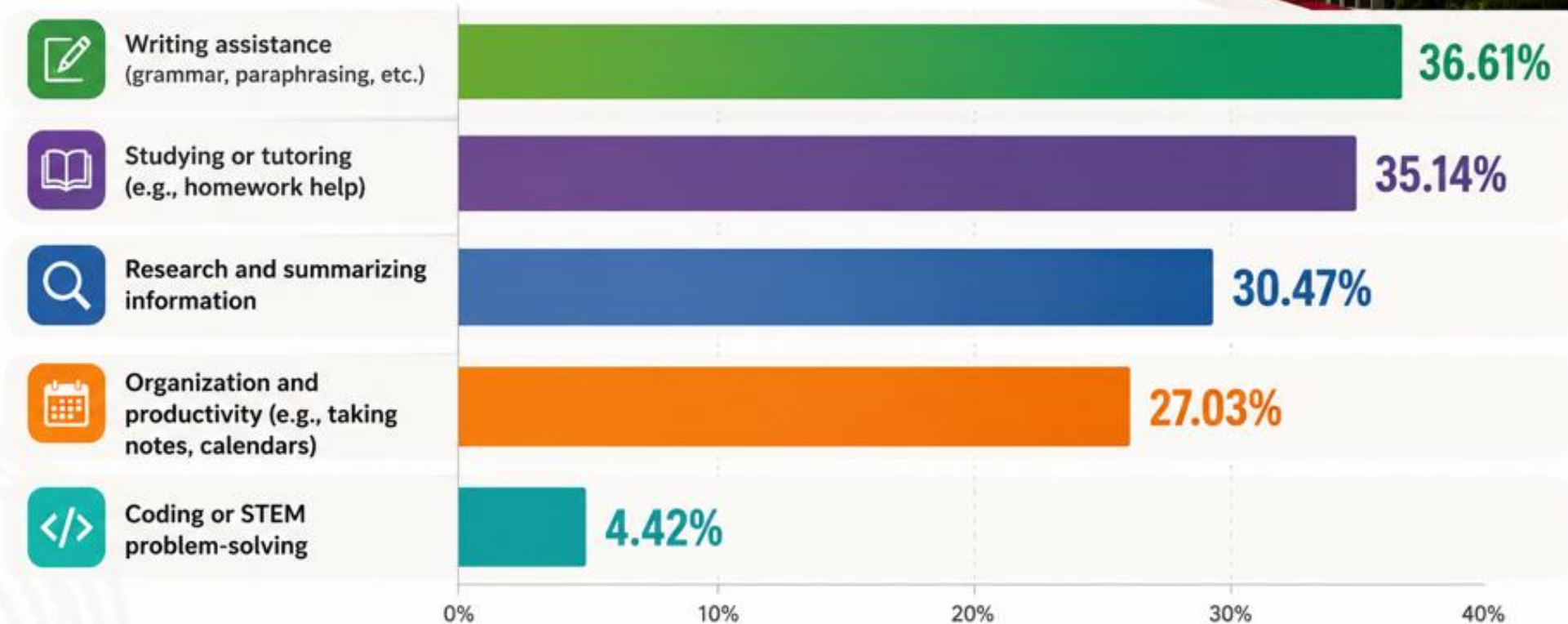
Students are engaging with AI in meaningful ways across learning, productivity, and creativity.

COUNTY COLLEGE
OF MORRIS

RANDOLPH, NEW JERSEY

HOW OUR STUDENTS USE AI IN ACADEMIC WORK

In what ways do you currently (or plan to) use AI in your academic work? *(Select all that apply)*

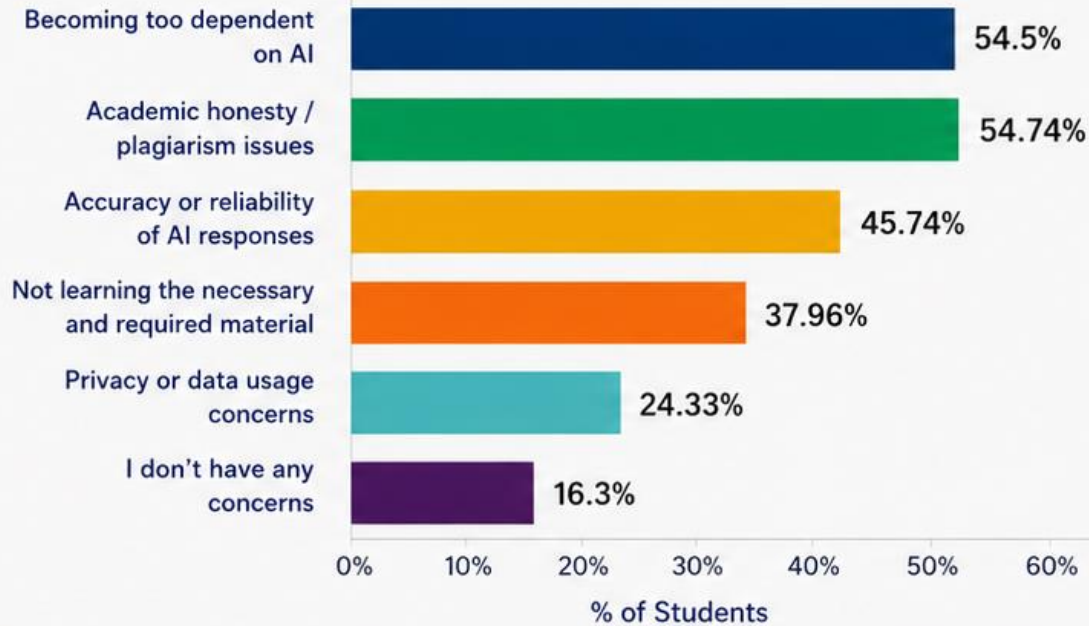


AI in College: Student Concerns and Support Needs

Insights from County College of Morris Students



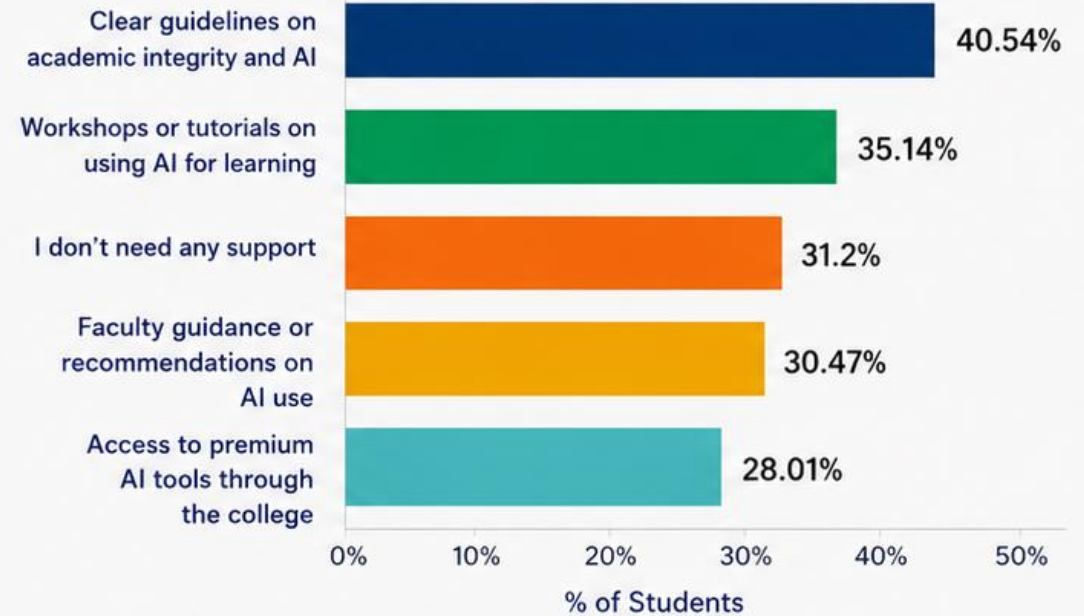
Top Concerns About Using AI in College



More than half of students are concerned about becoming **too dependent** on AI and **academic honesty**.



What Support Would Help Students Use AI More Effectively



Students want **clear guidance**, hands-on learning opportunities, and **faculty support** to confidently and responsibly use AI.



KEY TAKEAWAY:

Students see the value of AI but need support to use it ethically, effectively, and with confidence.

Q20 How comfortable are you with AI being integrated into classroom tools or learning platforms? 10 Stars being very comfortable

Answered: 362 Skipped: 128

5.3★

average rating



	1	2	3	4	5	6	7	8	9	10	TOTAL	WEIGHTED AVERAGE
★	15.75% 57	7.18% 26	8.29% 30	7.18% 26	13.26% 48	11.33% 41	12.71% 46	7.46% 27	3.87% 14	12.98% 47	362	5.31

EDUCAUSE







WHAT STUDENTS
REALLY
THINK OF TECHNOLOGY AND AI

HOW STUDENTS USE GENERATIVE AI TOOLS

At Two-Year Colleges



Percentage of Students Who Use Generative AI Tools
(Frequently or Very Frequently) *n* = 245

Purpose	% of Students Who Use Frequently or Very Frequently
 Creating study materials (e.g., self-quizzes, flash cards)	20.10%
 Proofreading/editing	17.30%
 Explaining solutions to problems without getting answers	15.20%
 Brainstorming or assignment planning	15.20%
 Summarizing content such as lecture notes and articles	14.40%
 Getting answers to problems	11.60%
 Getting personalized feedback on course assignments or exams	10.70%
 Learning discipline-specific workforce skills	10.70%
 Getting personalized feedback on course or degree progress	10.40%
 Language translation	9.90%
 Drafting papers or essays	8.20%
 Developing AI literacy (e.g., evaluating AI outputs, experimenting with AI use cases)	7.40%
 Image or audio generation	6.90%
 Creating new AI-powered tools	6.60%



Students' Perspectives on AI in Academic Settings

Insights from County College of Morris Students



Top 5 Concerns

Which potential risks of using generative AI in academic settings concern you the most? (Select all that apply.)

**% of Total Respondents
(n = 245)**



Plagiarism or cheating

52%



Over-reliance on AI tools in academic work

47%



Falsely being accused of using AI inappropriately

46%



Spreading false information unintentionally (misinformation)

41%



Difficulty in judging AI-generated content for accuracy or quality

41%



Top 5 Benefits

Which potential benefits of using AI in academic settings are most exciting to you? (Select all that apply.)

**% of Total Respondents
(n = 245)**



Saving time on academic tasks (e.g., note-taking, scheduling, automation)

29%



Getting real-time academic support

28%



Receiving instant feedback on work and progress

26%



Personalizing learning experiences

25%



Making coursework and assignments more interactive

23%



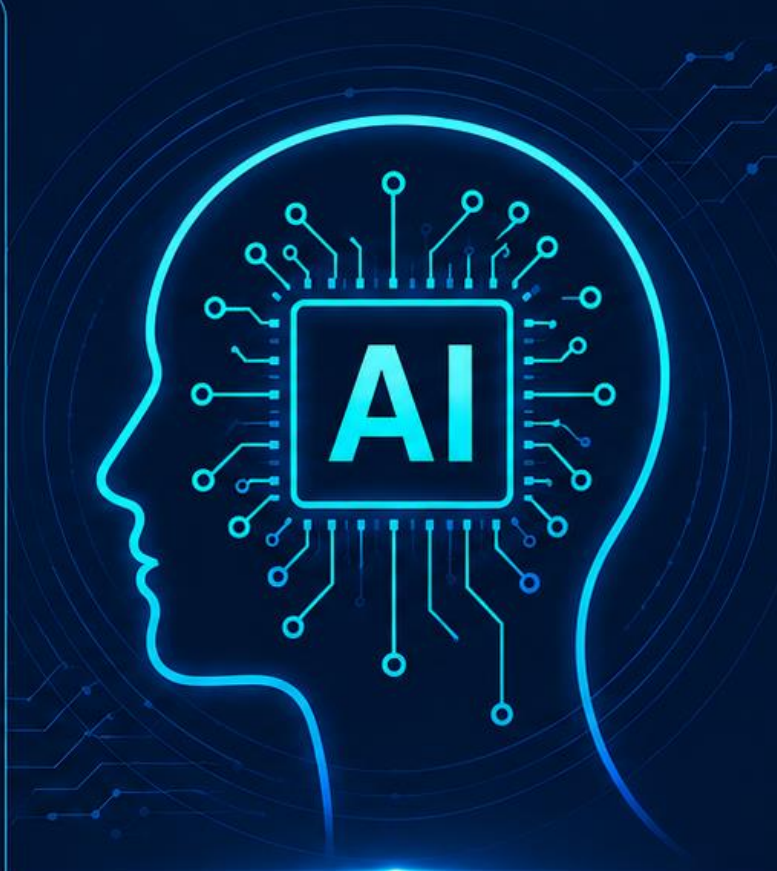
Overall, how many of your instructors have **provided clear guidance** about the do's and don'ts of using generative AI in your courses?



RESPONSE:

54.7%

Most or All



Overall, are your instructors actively finding ways to **incorporate generative AI** into your course assignments and activities?



RESPONSE:

22.10%

Yes

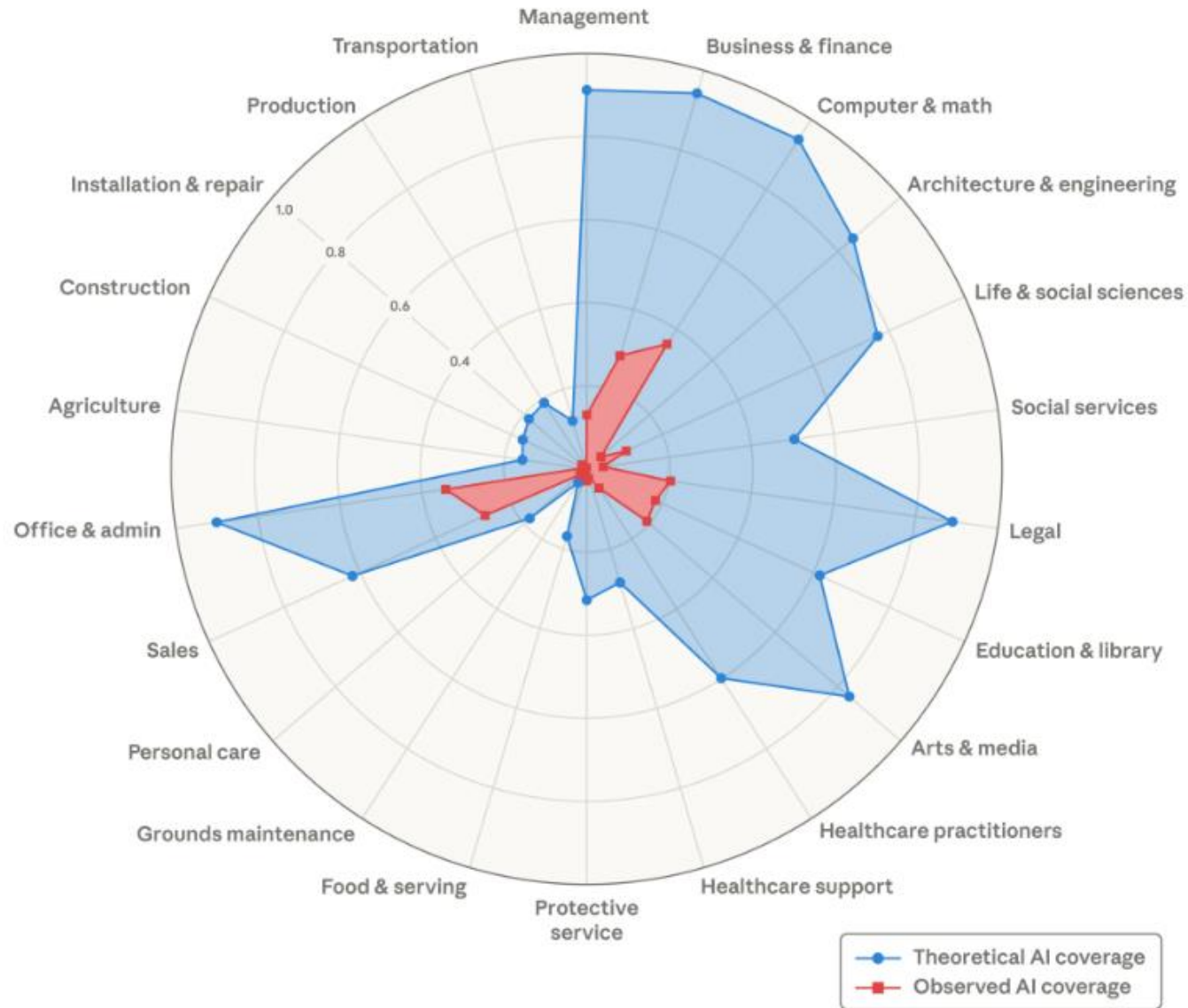


AI GUIDANCE IS GROWING.

Clear expectations. Active integration. Stronger learning together.

Theoretical capability and observed usage by occupational category

<https://www.anthropic.com/research/labor-market-impacts>



Eloundou et al.'s metric,
B- scores tasks on a simple scale:

1 if a task can be doubled in speed by an LLM alone

0.5 if it requires additional tools or software built on top of the LLM

0 otherwise.⁴

Thank you
Kelly Fitzpatrick
kfitzpatrick@ccm.edu